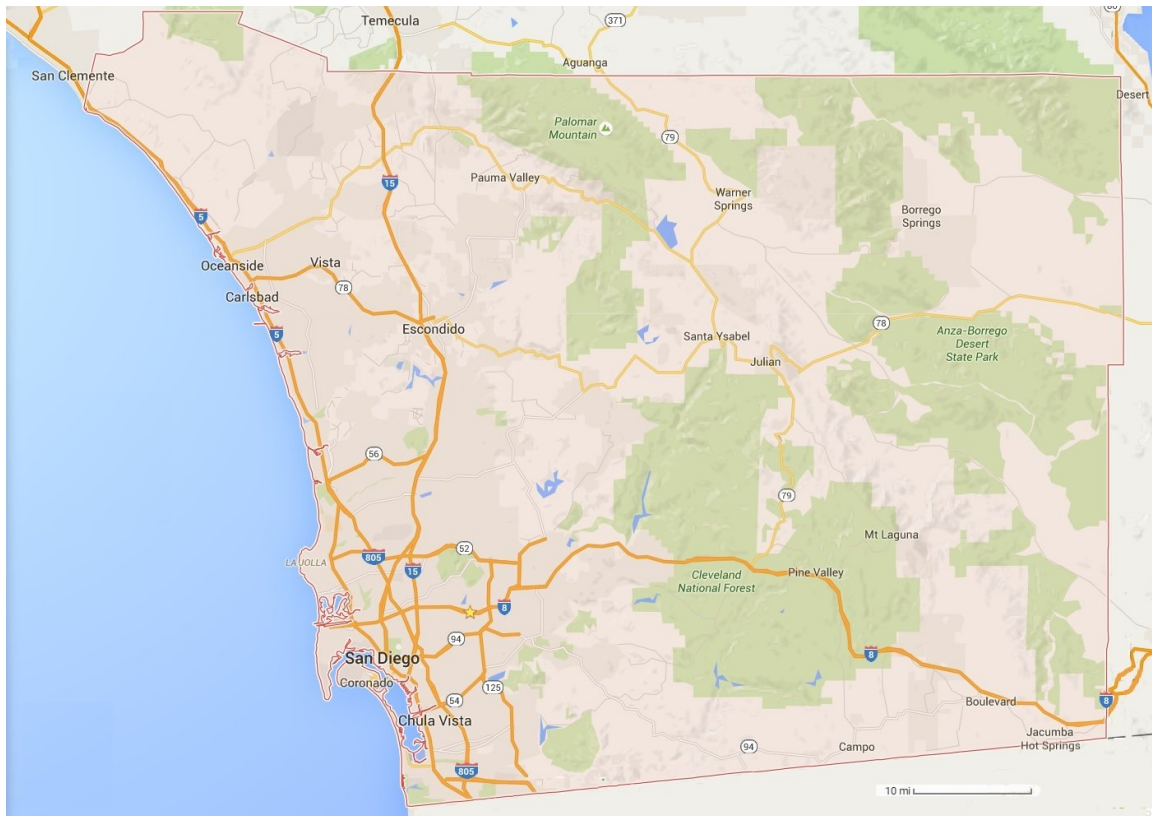


This is the eBook for
some of Calypso's
trips around
San Diego County.



Calypso Does San Diego



San Diego County

Bounded on the north by Riverside County,
On the East by Imperial County
On the South by Mexico
and on the west, the
PACIFIC OCEAN



Train



Plane

Boat



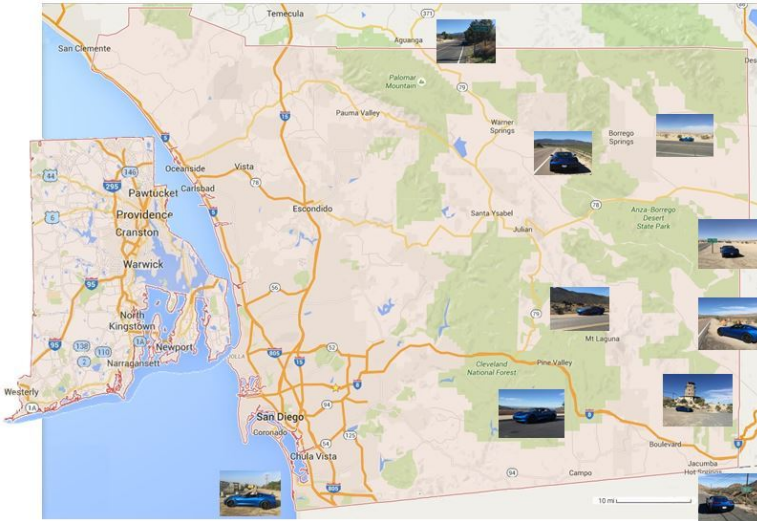
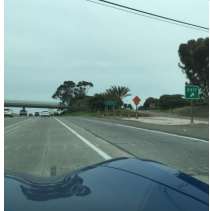
Getting "into" San Diego County can be done in any one of 4 different ways. There are three typical points of entry; 1) By Train, 2) By Plane, or 3) By boat. Calypso and I visited those three places, just to illustrate the point. BUT where Calypso had real fun was the FOURTH method of getting "into" San Diego County.

Calypso and I went on an "EXPLORE".

> Next Page >>>>>>>>>

Inter-state 5 or 15; the two more popular ways into San Diego by car. I-5 is the coast road and I-15 brings you in through the foot hills. San Diego county is 3.7 times bigger than Rhode Island, where I am from. Rhode Island has 44 highways into and out of the state. San Diego has six.

Calypso and I did all six one day. 359 miles and we covered all the highways into and out of San Diego County. You should do the same. I promise you it will be a fascinating day from the deserts to the mountains to the ocean; there is something for everyone.



Coming in from the Desert
will most likely bring you in on Inter-state 8.
OR
I-10 (Palm Springs) will bring you around to I-15
or maybe the picturesque back way through the
hill country.
Perhaps with stops in Borego, Julian, or Ramona.

The desert and the hills provides an excellent contrast
and the drive will be pleasant if the temp is below 110.







At the top of my list of things to do in San Diego, is **BRUNCH** at the **Hotel Del** out on Coronado. But of course after a meal like that; there is only one thing to do. The trip back across the bay to **Sea Port Village** and a walk along the waterfront to work off all the calories that were consumed at Brunch.

HOTEL DEL / Sea Port Village = A GOOD DAY



**THE
ZOO**



**SEA
WORLD**



**&
The
WILD
ANIMAL
PARK**



LEGO Land and Sea Life Aquarium



Then there are the traditional places that people go to and see in San Diego.

The "Touristy" things

The infamous SAN DIEGO ZOO

SEAWORLD

and

THE WILD ANIMAL PARK

These places aren't just for the kids, adults rave about these places as they are indeed pretty cool places.

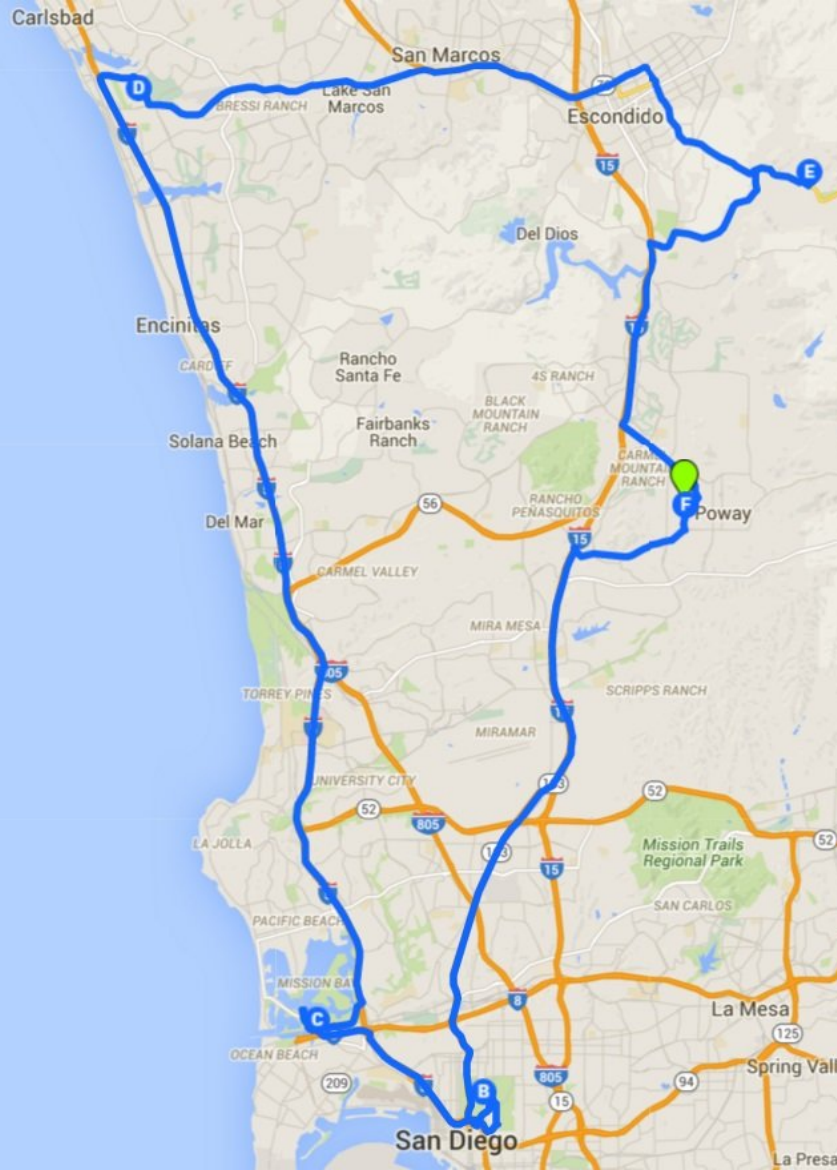
And exclusively if you have young kids with you, I have thrown in the "must see"

LEGO LAND and
It's SEA LIFE AQUARIUM

While I honestly recommend you set aside the appropriate amount of time to see each place in it's appropriate detail; Calypso covered all five destinations as shown here on the left and right in less than two hours.

The green dot (A/F) our house to the Zoo (B) is about a half hour. About the same for Seaworld (C). Head the other way to Lego Land (D) for 45 minutes, or to the Wild Animal Park (E), which takes about a half hour.

FUN PLACES ALL OF THEM.





Having a car like Calypso, makes you want to drive all over the county of San Diego. But there are lots of things to do, in and around "Downtown". There is the waterfront of San Diego Bay, and downtown city features, to say nothing of the other attractions in the various communities.

Perhaps the start of the "downtown" touring should begin with Presidio Park and Old Town shown here on the right. And on the following pages I suggest the other places worth seeing "downtown":

The waterfront would include the USS Midway, and the Maritime Museum.

There is the Gas Lamp Quarter, the Convention Center, and the "Ball Park".

Venturing slightly out of the strict "Downtown" area there is Shelter and Harbor Island

And the monuments out on Point Loma.

Further out there are **FIVE** communities with the word "**BEACH**" in them, and with the **Pacific** occupying the western boundary of the county -

BEACHES are a MUST DO.







The USS MIDWAY is "Nice"; but ya gotta visit the "Boats" at the Maritime Museum



BTW if you are at the Maritime Museum, the county has put up a nice little park across the street, with parking underneath available to the public on week-ends.

Calypso is not a huge fan of
"Downtown".

It usually means she is parked
somewhere while I'm out doing
things with other people.

Calypso likes my full attention.

THAT being said, downtown
does have some great places to
go visit and to see and do
things.

The other thing to keep in mind.
However long it takes you to get
to the City of San Diego from
anywhere in the county - it will
take you that long again to get
to where you are going in-town.
Yes, there is that much traffic.







**They call this the Cabrillo National Monument Park - its so much more than that.
There is a lot more going on here.**



Point Loma, which is oriented North and South gives some great panoramic views in virtually every direction. You can spend a good deal of time checking out all the scenery and the land-marks including the Veteran's Cemetery and the Submarine Base.

You can't forget this is a "Military" town with WWII historic roots. There is just as much going on below the surface as there is on it.

Check out the bunkers - you can tell "we" were concerned in the 40's.



Then finish the trip to Point Loma with dinner and a show at Humphrey's on Shelter Island.

They always have good live shows.



BEACHES

When the entire western border of the county is water, some time has to be spent with the beaches. With the exception of some of San Diego Bay very nearly the entire coast is a beach in one form or the other. Some are very easy to get to, others are rather difficult, as you have to climb cliffs to get to them, which is not recommended. Just by happen chance there are FIVE communities in San Diego County that have the word BEACH in their name. So in this book I will provide you with "Ground Zero" for each one.

The Communities are from North to South:

Solana Beach

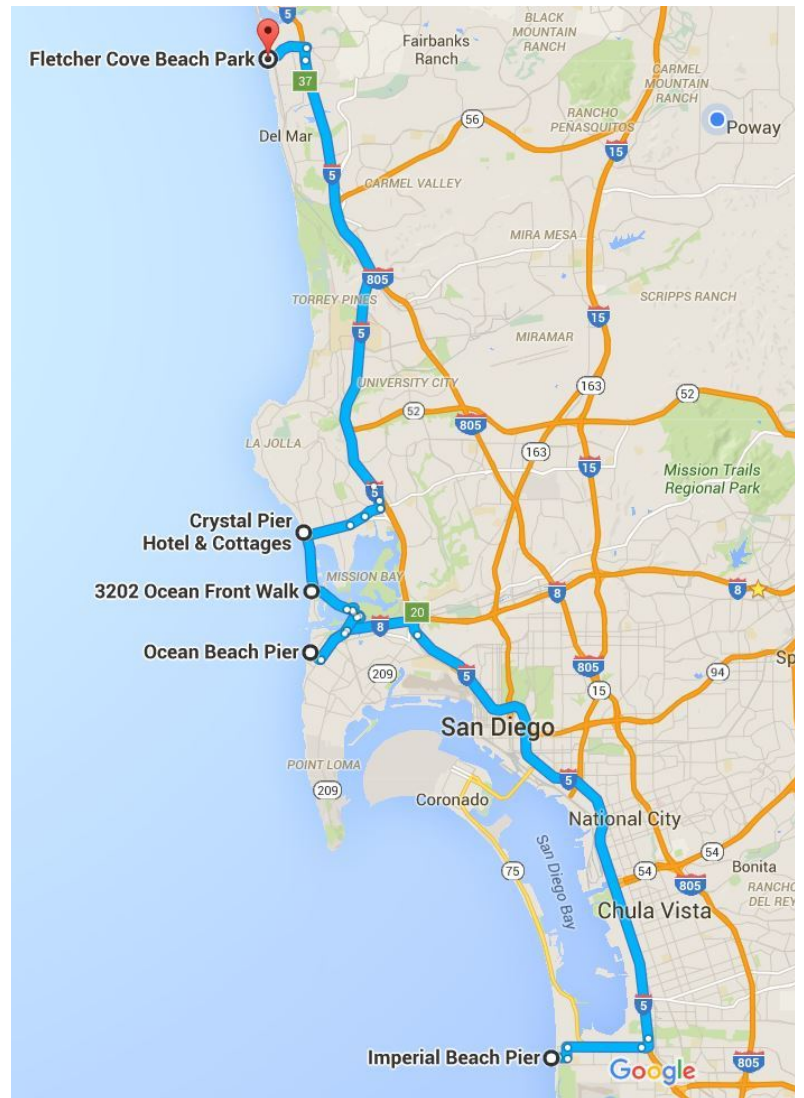
Pacific Beach

Mission Beach

Ocean Beach

Imperial Beach

The following pages will reverse the order, because my time in San Diego started in 1969 in Imperial Beach and I finally left the coast for inland from Pacific Beach in 1975.





Imperial Beach has been doing an excellent job of revitalizing their community. It was a run-down border town when I was there in 1969, and since then they lost their pier in an El Nino year storm.

The pier is now about 10 blocks south of where it used to be and it is now the "center" of the beach area, known for it's world famous "Sand Castle Building Contest" held yearly.

Visiting Imperial Beach is off the beaten path - but well worth the visit.

I had to double up the pictures here, to show where the old Imperial Beach Pier was.

It was at the end of Palm Ave. and Ocean Lane which happened to be where I lived in 1969.

Behind where I was standing when I took this picture is the "Old Plank Inn"; a beach bar where I lost many hours with my under-age drinking.

"My" Ocean Lane was a one-way street and I always thought that it aligned well with my time in the Navy. I was on a one-way street of adventure for those 9 years. Much like the trips around the country in Calypso, on a smaller scale of course.



OCEAN BEACH PIER



Heading north from Imperial Beach, up the "Silver Strand" to Coronado, you will pass by miles and miles of beach. One of the best overnight "on the beach" camping sites can be found there, although reservations are needed years in advance. And the other down-side is that a good deal of the beach is owned by the US Navy for the Seal Teams to practice on. So your "lovely, on the beach camping" might be disturbed by a full-on military assault at one point in time or another.

Again, beaches in San Diego abound. Just head west and you will run into one of them no matter where you start from.

But again, as I mentioned earlier, this book is concentrating on the communities with the word "Beach" in them. So the next stop north of Imperial Beach is Ocean Beach, then Mission Beach and Pacific Beach.

>>>>> Mission BEACH >>>>>>>



The Crystal Pier Cottages at **Pacific Beach**



< Belmont Park Roller Coaster

MISSION BEACH

Mission Beach Board walk>>>

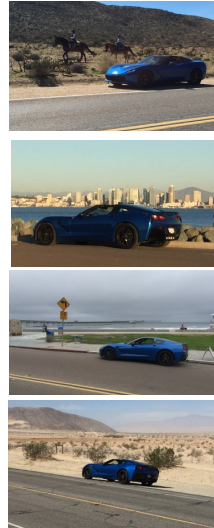


The "Beach" community trip ends with Solana BEACH.

It's a small town nestled in with the others that encompass Highway 1 and 101 on their winding coastal way north.

And that gives food for thought - perhaps this Calypso Tour of San Diego County is just a stop-over between Calypso's Route 66 trip, and perhaps a future trip up the coast via Highway 1 and 101.

It's one heck of a cool place to start or end any trip, with it's mountain roads, coastal views, desert highways, and big city attractions as well.



COMING

Or

GOING

Calypso has a great time "doing" San Diego County.

You should do the same sometime. Mountains, Deserts, Hills, Beaches and Big City it's all here.

(PS - send me ideas for Volume 2.)